

L.A.B. Equipment's VibraTest™ Series of mechanical shakers with a typical frequency range of 8-60 Hz, provide a low-cost approach for testing electronic products and components for loose solder connections and hardware failures. AMC+ (Advance Machine Control) comes standard with our VibraTest™ Series, this feature expands the capabilities of the machine even further.

## Control System

Operation is performed through L.A.B.'s exclusive Advanced Machine Control Plus (AMC+), a Windows based control and display software package.

Select either continuous vibration or a frequency sweep mode. In continuous vibration mode, select the frequency level, maximum acceleration limit, and run duration. In frequency sweep mode, select the lower and upper frequency limits, cycle period, maximum acceleration limit and run duration.



## EIGENSCHAFTEN

- Reaction type machine performs vertical sinusoidal test.
- Test Frequency is infinitely adjustable between 8 and 60 Hz under operation.
- Various combinations of frequency and displacement can be configured to result in up to 3.2G or 10G acceleration.
- Self contained, built in isolation system eliminates the need for special foundations.
- Advanced design pneumatic system provides low frequency isolation and payload stability that is far superior to steel spring isolators.
- System displacement is manually adjustable.
- Once set, displacement is maintained at a constant level regardless of the test frequency.

## TECHNISCHE DATEN

<b>Power connection</b>	230 V / 50 Hz
<b>Compressed air connection</b>	nein
<b>PC connection</b>	USB
<b>Width / Diameter</b>	
<b>Depth</b>	
<b>Height</b>	
<b>Weight (net)</b>	

**Vibra**  
TEST

L.A.B VibraTest™ Series of mechanical shakers with a frequency range of 8-60 Hz, provide an effective approach for testing electronic products, batteries, and parts for loose components and hardware failures. Advance Machine Control (AMC+) comes standard with our VibraTest™ Series, which expands the capabilities of the machine even further.

**CONFIDENCE IN L.A.B**

Our VibraTest™ Series of mechanical vibration systems meet IEC, SAE, ASTM, MIL, ISO and other internationally and industry standards. We offer a wide variety of standard table sizes and capacities along with a standard frequency range from 8 to 60 Hz.

**VIBRATEST™ SERIES FEATURES**

- Reaction type machine performs vertical sinusoidal test.
- Test Frequency is infinitely adjustable between 8 and 60 Hz under operation.
- Various combinations of frequency and displacement can be configured to result in up to 3.2G or 10G acceleration.
- Self contained, built in isolation system eliminates the need for special foundations.
- Advanced design pneumatic system provides low frequency isolation and payload stability that is far superior to steel spring isolators.
- System displacement is manually adjustable.
- Once set, displacement is maintained at a constant level regardless of the test frequency.
- Standard utility requirements: 70-psi (480 kPa) air for suspension adjustments (low volume).

**VIBRATEST™ SERIES OPERATION**

Operation is performed through L.A.B's exclusive Advanced Machine Control Plus (AMC+), a Windows based control and display software package. Select either continuous vibration or a frequency sweep mode. In continuous vibration mode, select the frequency level, maximum acceleration limit, and run duration. In frequency sweep mode, select the lower and upper frequency limits, cycle period, maximum acceleration limit and run duration. In either mode, the user calculates the displacement with a known frequency and acceleration and then manually adjusts counter-weights on the vibration table to deliver the calculated displacement.

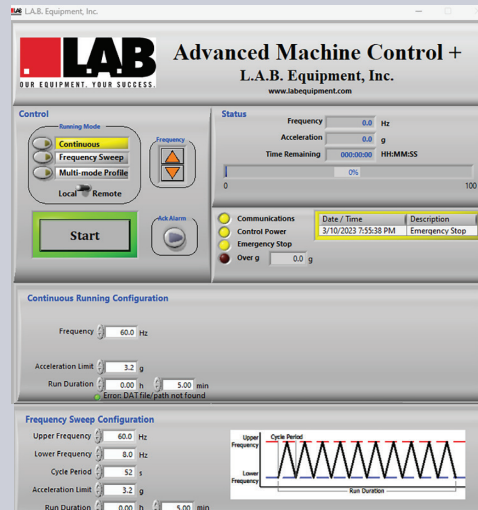


# MECHANICAL VIBRATION TESTING

# VibraTest™ SERIES

## OPTIONAL FEATURES

- 10G Maximum Acceleration
- Insulated table top
- V-Groove Casters for Chamber Interface
- Height risers
- Track for Chamber Interface
- Diaphragm Support Brackets
- Stainless Steel Drip Pan



## STANDARD FEATURES

- Windows 11 PC system with Accelerometer and Power/Signal Conditioner
- Auto-Liner Cycling Function
- Over G Interlock Limits
- Acceleration Display (G)
- Frequency Monitoring and Control
- Remote Interlock Start/Stop Function (For External Chamber)
- Run Duration Timer w/Auto Stop Function



	Metric	English	Metric	English	Metric	English	Metric	English
<b>Machine Type</b>	VibraTest 24		VibraTest 36		VibraTest 48		VibraTest 48x66	
<b>Payload Capacity</b>	45 kg	100 lbs	136 kg	300 lbs	227 kg	500 lbs	227 kg	500 lbs
<b>Displacement</b>	1.3 mm	0.05 in	2.2 mm	0.09 in	1.8 mm	0.07 in	1.8 mm	0.07 in
<b>Maximum Acceleration</b>	3.2 G or 10 G*		3.2 G or 10 G*		3.2 G or 10 G*		3.2 G or 10 G*	
<b>Standard Table Size</b>	610x610 mm	24"x24"	914x914 mm	36"x36"	1219x1219 mm	48"x48"	1219x1676 mm	48"x66"
<b>Standard Mounting Holes</b>	m10x1.5-100mm		m10x1.5-150mm		m10x1.5-150mm		m10x1.5-150mm	
<b>Standard Voltage</b>	200-230 VAC, 50/60 HZ, 1 Phase							
<b>Approximate Weight</b>	159 kg	350 lbs	340 kg	750 lbs	454 kg	1000 lbs	651 kg	1435 lbs

\* Each system is available in the 3.2G or the 10G model. Please specify your desired maximum level when inquiring.

Due to our continuous commitment to product development, the above specifications and features may be modified without notice.



**L.A.B. Equipment, Inc.**, 1549 Ardmore Avenue, Itasca, IL 60143, USA  
 Phone: 630-595-4288 [www.labequipment.com](http://www.labequipment.com)

## AMC+

## Control & Monitoring System for Vibratest™

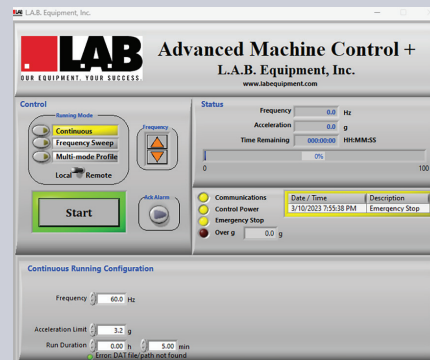
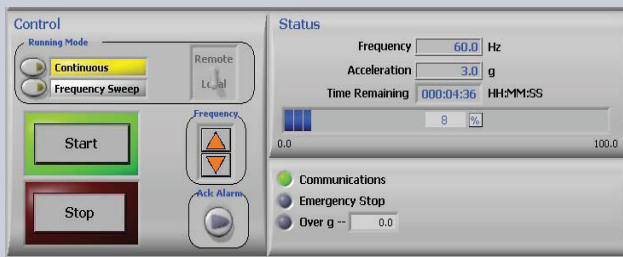
## AMC+ Advanced Machine Control **Vibra** TEST

### ADVANCED MACHINE CONTROL

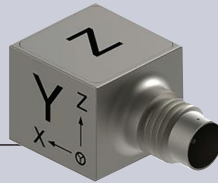
- Designed for Vibratest™ Series vibration tables
- Windows 11 Software
- Includes interlock for external chambers (start/stop)
- Includes run duration timer with auto-stop function



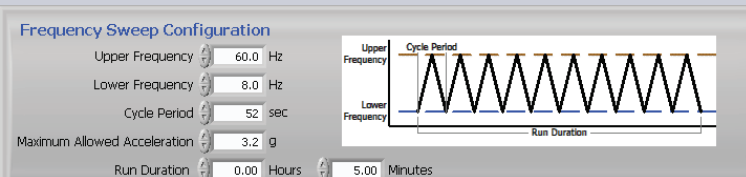
### CONTROL AND STATUS PANEL



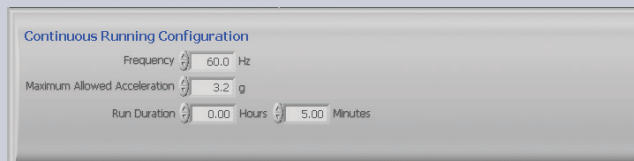
- 50G IEPE type Single Axis Accelerometer (Tri-axial optional)
- Interface Cables
- Windows 11 PC System



### AMC+ FREQUENCY SWEEP FUNCTION



### AMC+ LINEAR SWEEP FUNCTION



Due to our continuous commitment to product development, the above specifications and features may be modified without notice.