

## TESTLAB PROFESSIONAL™ VIBRATION(V)

**Test Lab Professional (TLP)** wurde speziell entwickelt, um die Anforderungen von Verpackungs- und Produktrüflabors bei der Verwaltung von Fall-, Stoß-, Schlag- und Vibrationstests ihrer Produkte, Verpackungsmaterialien und Verpackungen zu unterstützen. Jetzt mit einer USB 3.0-Schnittstelle, die es dem Benutzer ermöglicht, die Software schnell und einfach zu installieren und einzurichten!



- **TestLab Professional™ Schwingung(V)**

Windows-kompatibles Datenerfassungs- und Analysesystem für Schwingungsprüfanwendungen

TLP Vibration Merkmale

Datenfenster: eine Sekunde Dauer, sekundlich aktualisiert

Tiefpassfilterung der Daten: keine oder benutzerdefinierte (nur diskrete Wellenformen)

Grenzfrequenzen

### TECHNISCHE DATEN

<b>Stromanschluss</b>	230 V / 50 Hz
<b>Druckluftanschluss</b>	nein
<b>PC-Anschluss</b>	RS-232
<b>Breite / Durchmesser</b>	
<b>Tiefe</b>	
<b>Höhe</b>	
<b>Gewicht (netto)</b>	

Ingenieurbüro Walter

all4test

Tel.: +49 (0)9842 - 9 36 96 30 · Fax: +49 (0)9842 - 9 36 96 33 · info@all4test.de  
ib-walther · Willy-Brand-Straße 4 · D-97215 Uffenheim · www.all4test.de



# TEST LAB PROFESSIONAL™

OUR EQUIPMENT. YOUR SUCCESS.

## TEST LAB PROFESSIONAL™

Test Lab Professional (TLP™) is specifically designed to support the needs of packaging and product reliability laboratories. The management of all your laboratory drop, shock, impact, and vibration measurements are made repeatable, faster and give you the documentation you need with TLP™ from L.A.B Equipment, Inc. Our new and improved version is quicker to install, more intuitive and gets you from data capture to documented result quicker.

## TEST WITH CONFIDENCE

TLP™ is a Windows®11 based data acquisition system designed to complement any drop, shock, and vibration package/product test analysis process. TLP™ provides the ability to accurately capture, analyze, and provide quantitative results of your product and package testing. TLP™ is critical in assessing your packaged system's distribution environment while utilizing a laboratory controlled environment.

**TEST**  
with  
**CONFIDENCE**

## TLP™ FEATURES

- Data acquisition and analysis system
- Provides 4-Channel simultaneous data capture capabilities
  - (1) Single user TLP™ software license
  - (1) USB dynamic signal acquisition module (4 channels) with USB cable
  - (2) 30 feet (9 meter) accelerometer cables
  - (1) 1000G (DS) triaxial or (1) 50G (V) IEPE accelerometer
  - Supplied with an application specific 500G/1000G single axis, triaxial, or 50G vibration IEPE type accelerometer

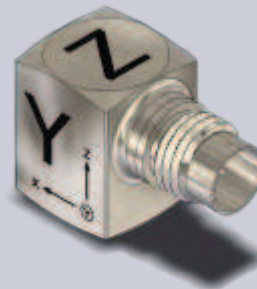


**USB**  
connect



Available with A  
Triaxial Accelerometer!

(Drop/Shock Only)



OUR EQUIPMENT. YOUR SUCCESS.

A Spectral Dynamics Company



L.A.B Equipment, Inc., 1549 Ardmore Avenue, Itasca, IL 60143, USA

Phone: 630-595-4288 www.labequipment.com

DATA ACQUISITION

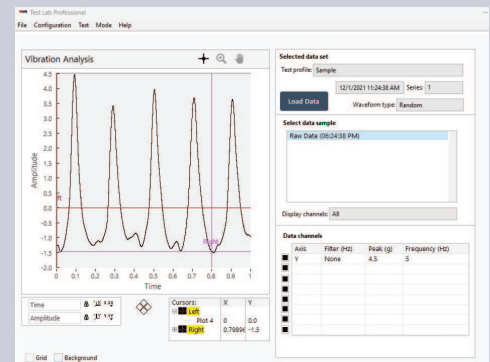
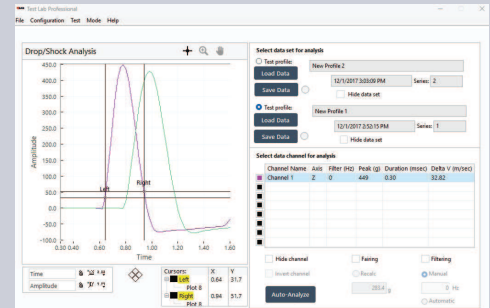
## AVAILABLE CONFIGURATIONS

Drop & Shock (DS) • Vibration (V) • Drop, Shock, & Vibration (DSV)

TLP™ is a four channel PC-based data acquisition system designed to compliment our entire range of product reliability testing equipment. In addition to capture and analysis capabilities for shock, drop, and impact test data, TLP™ also possesses an intuitive vibration acquisition and analysis capability for systems producing vibration within a frequency range of 1 to 500 Hz.

### TLP™ Features

- Peak G, Duration, and Change in Velocity analysis
- Single Axis as well as Triaxial data capture
- Zoom and Pan
- Auto Analyze for standard views
- Delta-V and Pulse duration auto calculate
- English or SI unit selection
- Supports test protocol sequences
- Manual or automatic scaling
- All vibration waveforms: Peak G and Frequency analysis
- Discrete vibration waveforms: Peak G Transmissibility analysis
- Logarithmic or linear scaling
- View raw data and analysis simultaneously
- Save data samples manually or with one-shot stop watch timer
- Random vibration waveforms: Power Spectral Density (PSD), instantaneous or average and PSD Transmissibility analysis



### TLP™ SPECIFICATIONS

- Measure and capture acceleration (g), pulse duration (ms) and velocity change (delta-V)
- Sufficient to acquire 0.5 msec half-sine pulses with 6% theoretical error on 4 channels simultaneously
- Input ranges:  $\pm 10V$ ,  $\pm 5V$  (default),  $\pm 0.5V$ ,  $\pm 0.05V$
- Triggering: manual or automatic (per axis or triaxial)
- Data window: manual or automatic duration
- Low pass data filtering: none, automatic or user-specified cutoff frequencies
- Auto-analyze for standard views
- Auto-calculate change in velocity and pulse duration
- Supports Test Protocol sequences
- Increased sampling rate enhances high frequency vibration resolution
- Increase filtering levels from 0-4999 Hz to 0-99,999 Hz (1 Channel discrete waveform)

Due to our continuous commitment to product development, the above specifications and features may be modified without notice.